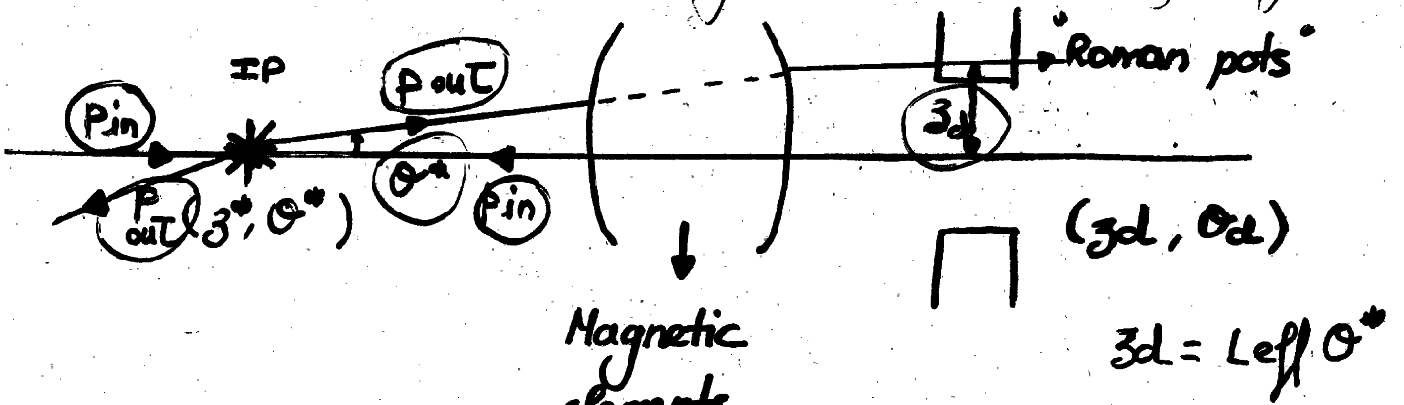


# ELASTIC SCATTERING

How to detect very small scattering angles?



$$\begin{pmatrix} z_d \\ \theta_d \end{pmatrix} = \begin{pmatrix} M_{11} & M_{12} \\ M_{21} & M_{22} \end{pmatrix} \begin{pmatrix} z^* \\ \theta^* \end{pmatrix}$$

↓  
Transfer matrix

$$z = x, y$$